

# ACRE Members 2020 Factsheet

In 2020 we undertook a survey of ACRE members to document their size and reach, the services provided and fit with rural challenges. This is what we learnt...

**38**

ACRE is a national body for **38 member organisations**



ACRE members are charitable local development agencies, generally based at county level, who have a long-established history of leading, supporting and enabling rural community initiatives

ACRE members spend:



of their time working in support of **rural communities**

All ACRE members provide a support and advice service for England's



**10,000 village halls**

Over **30** other services are provided, the most common being:



Community Consultation



Funding advice



Supporting health & wellbeing initiatives

ACRE members rank the following as the most important concerns for rural communities:



**1** Health and Wellbeing

**2** Loneliness and social isolation

**3** Access to community facilities

# ACRE Members 2020 Factsheet



Every year  
ACRE members  
reach:



Whilst leveraging in  
approximately

 **35,000**

Groups and  
organisations across  
England

**£34m**



in support of  
**communities**

The largest  
ACRE member:

**96**

Full time  
staff

**£3m**  
Turnover



The smallest  
ACRE member:

**£110k**  
Turnover

**2**

Full time  
staff

Top 3 outcomes of members' work:

1



Reducing social isolation  
and loneliness

2

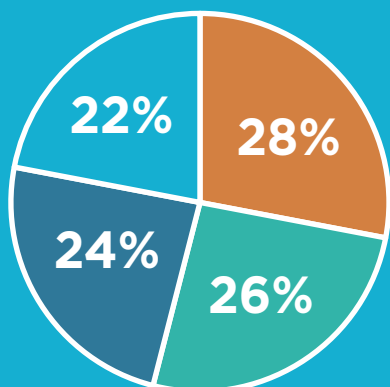


Providing a stronger voice  
for rural communities





3



Encouraging a culture of  
volunteering and mutual aid



Sources of funding for  
ACRE members:

-  Local contracts
-  Local grants
-  Other
-  National grants



ACRE members  
make a difference to rural  
communities.

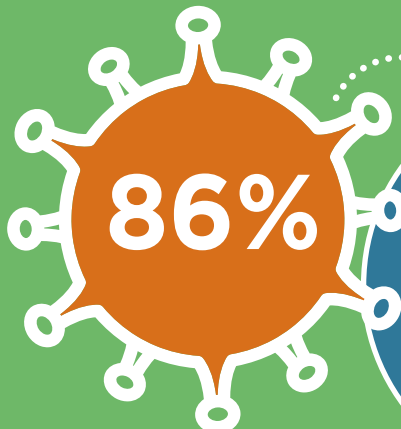
Find your member:  
[acre.org.uk/](http://acre.org.uk/)

[in-your-area/network-members](http://acre.org.uk/in-your-area/network-members)

# ACRE Members 2020

## Impact of Covid-19

In 2020, ACRE members were asked about the impact of CV19 on their organisation, including changes to income and running costs, increased service demand and confidence about future prospects.



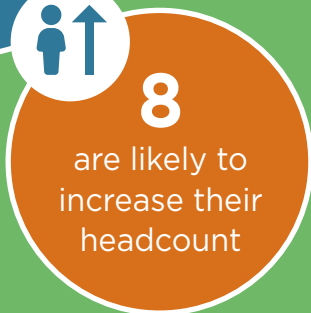
86% of ACRE members reported a significant increase in demand for village hall support due to CV19.



21 members expect their income to decrease between 10% - 60%



There is a high degree of variance in the change to running costs due to CV19.



Before CV19:



Autumn 2020:



6 members were 'not so confident' about future prospects. At the time of this survey, this had risen to 12

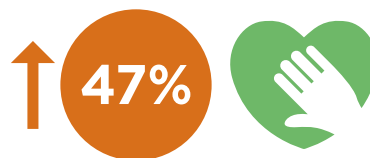
There has also been a **significant increase\*** in demand for:



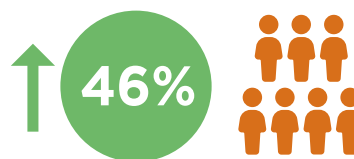
Food Distribution



Village Agents



Volunteer Support



Community Resilience

Source: ACRE Network Survey Autumn 2020

\*Amongst members who provide these services.