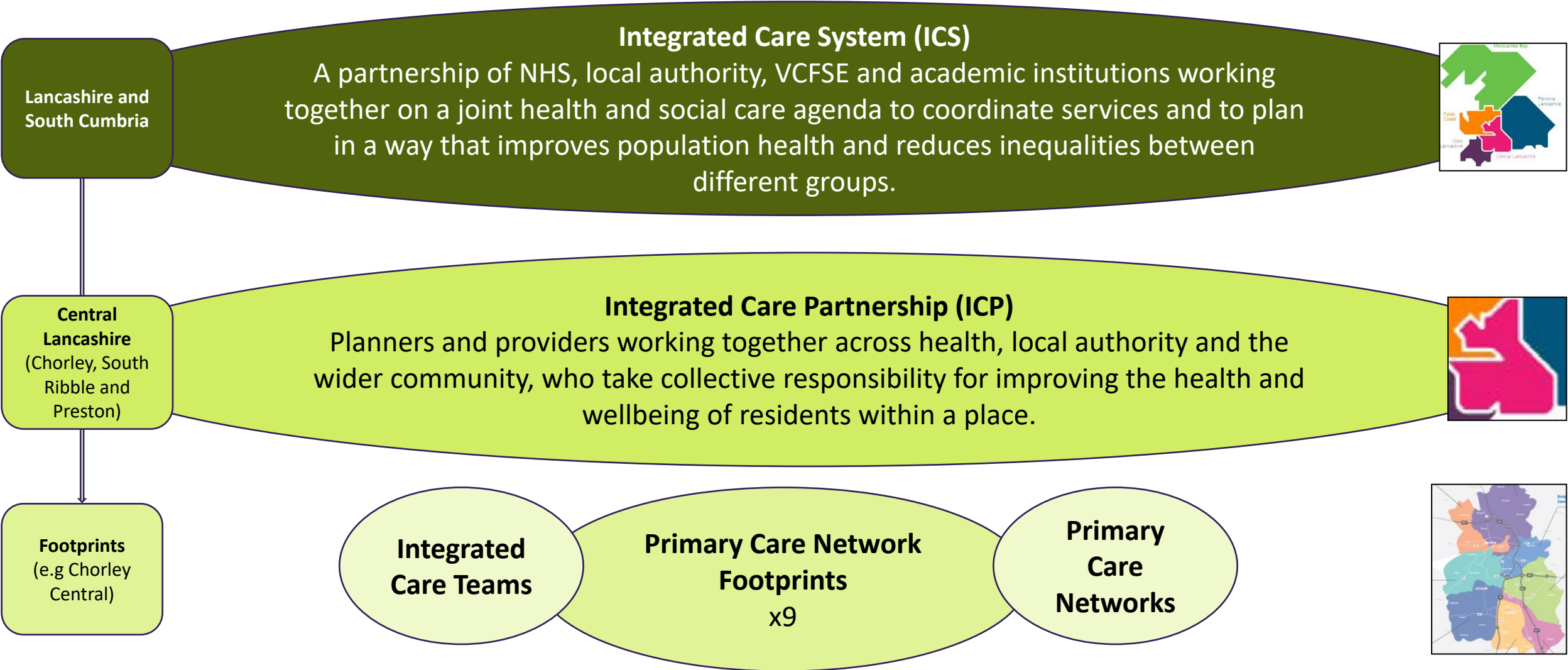


Language describing the layers of the ICS, in 2019 - 2021



Language to be used from 2021...

Lancashire and South Cumbria

Integrated Care Partnership

This is our partnership at system level called Lancashire and South Cumbria Health and Care Partnership. This term has been used in the most recent national guidance however is a change to how this term has been used previously. It was previously used to describe our five place-based partnerships.



Lancashire and South Cumbria

NHS Integrated Care Board

This is the new NHS organisation that will be established on 1 April 2021, subject to legislation. We expect this is likely to be known publicly as “NHS Lancashire and South Cumbria” which is subject to legislation.



Central Lancashire
(Chorley, South Ribble and Preston)

Place-based partnerships:

Planners and providers working together across health, local authority and the wider community, who take collective responsibility for improving the health and wellbeing of residents within a place. We have five place-based partnerships



Footprints
(e.g Chorley Central)

Neighbourhood Teams

Neighbourhoods
x 9

Primary Care Networks

